



RFLM-501202MC-299

Passive High Power Two Stage Passive Limiter Module - SMT

Features:

- Surface Mount Limiter Module: 5mm x 8mm x 2.5mm
- Frequency Range: 500 MHz to 2.0 GHz
- High Average Power Handling : +45 dBm (CW)
- High Peak Power Handling: +54 dBm
- Low Insertion Loss: 0.4 dB
- Low Flat Leakage Power : 21 dBm
- Low Spike Energy Leakage: 0.3 ergs
- Recovery Time: 500 nsec
- No external control lines or power supply required
- RoHS Compliant

Description:

The RFLM-501202MC-299 SMT Silicon PIN Diode Limiter Module offer both High Power CW and PeakPower protection in the 400 MHz to 2.5 GHz frequency range. It is based on a proven hybrid assembly technique utilized extensively in high reliability, mission critical applications. The RFLM-501202MC-299 offers excellent thermal characteristics in a compact, low profile 8mm x 5mm x 2.5mm package. The RFLM-501202MC-299 is designed for optimal small signal insertion loss permitting extremely low receiver noise figure while simultaneously offering excellent large input signal Flat Leakage for effective receiver protection in the 400 MHz to 2.5 GHz frequency range.

The limiter RF circuit characteristics provide outstanding passive receiver protection (always on) which protects against High Average Power up to 45 dBm, High Peak Power up to 54 dBmpulsed (pulse width = 1 usec, duty cycle = 0.1%), maintains low flat leakage to less than 21 dBm (typical),and reduces Spike Leakage to less than 0.3 ergs.

ESD and Moisture Sensitivity Rating

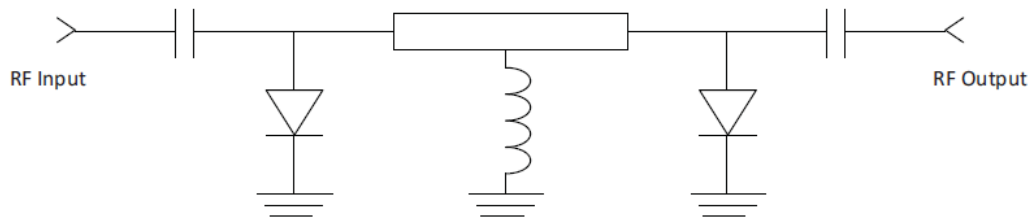
The RFLM501202MC-299 Limiter Module carries a Class 1C ESD rating (HBM) and an MSL 1 moisture rating.

Thermal Management Features

The RFLM-501202MC-299 based substrate has been design to offer superior long term reliability in the customer's application by utilizing ultra-thin Au plating to combat Au embrittlement concerns. Also, a proprietary

design methodology has minimized the thermal resistance from the PIN Diode junction to base plate (R_{THJ-A}) to less than 15°C/W . The two stage limiter design employs a second stage limiter and quarter wavelength spacer detector circuit which permits ultra-fast turn on of the High Power PIN Diodes. This circuit topology couple with the thermal characteristic of the substrate design enables reliably handling High Input RF Power up to 45 dBm CW and RF Peak Power levels up to 54 dBm (1 uSec pulse width @ 0.1% duty cycle with base plate temperature at 85°C).

RFLM-501202MC-299 Limiter Module Schematic - with RF Coupling Capacitors



Absolute Maximum Ratings

@ $Z_0=50\Omega$, $T_A=+25^{\circ}\text{C}$ as measured on the base ground surface of the device.

Parameter	Conditions	Absolute Maximum Value
Operating Temperature		-65°C to 125°C
Storage Temperature		-65°C to 150°C
Junction Temperature		175°C
Assembly Temperature	$T = 30$ seconds	260°C
RF Peak Incident Power	$T_{CASE}=85^{\circ}\text{C}$, source and load VSWR < 1.2, RF Pulse width = 1 usec, duty cycle = 0.1%, derated linearly to 0 W at $T_{CASE}=150^{\circ}\text{C}$ (See note 1)	+54 dBm
RF CW Incident Power		+45 dBm
Assembly Temperature		260°C for 30 seconds

Note 1: T_{CASE} is defined as the temperature of the bottom ground surface of the device.

RFLM501202MC-299 Electrical Specifications

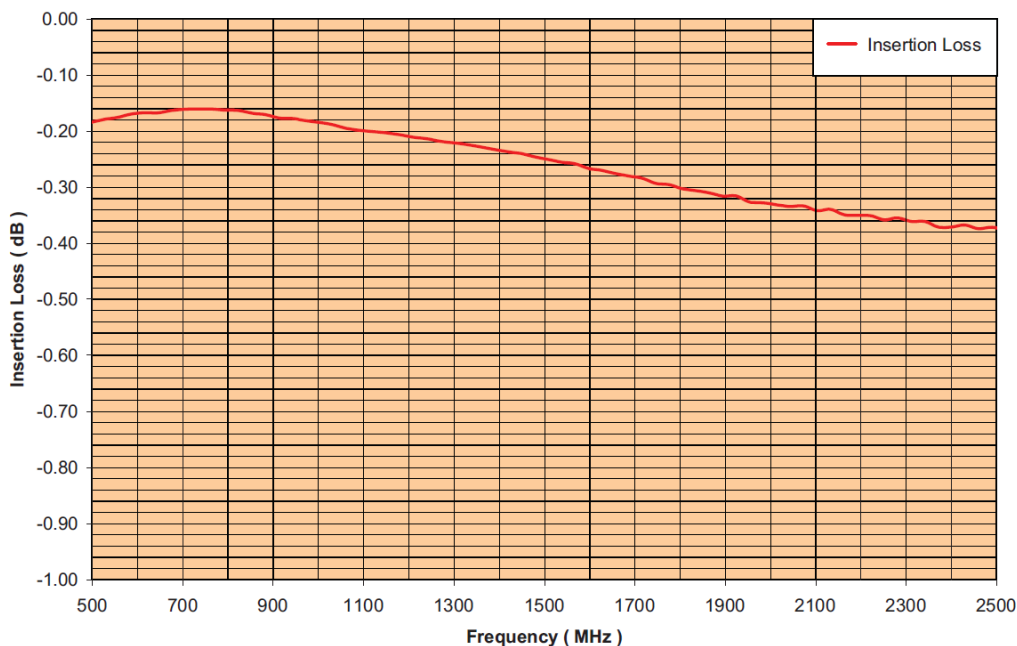
@ Zo=50Ω, TA= +25°C as measured on the base ground surface of the device.

Parameters	Symbol	Test Conditions	Min Value	Typ Value	Max Value	Units
Frequency	F		0.4		2.5	GHz
Insertion Loss	IL	400 MHz ≤ F ≤ 2.5 GHz, Pin= 0 dBm		0.4	0.6	dB
Insertion Loss Rate of Change vs Operating Temperature	ΔIL	400 MHz ≤ F ≤ 2.5 GHz, Pin ≤ -10 dBm		0.005		dB/°C
Return Loss	RL	400 MHz ≤ F ≤ 2.5 GHz, Pin= 0 dBm	18	20		dB
Input 1 dB Compression Point	IP _{1dB}	400 MHz ≤ F ≤ 2.5 GHz	7	8	10	dBm
2 nd Harmonic	2F _o	Pin= 0 dBm, F _o = 2.0 GHz	-45	-50		dBc
Peak Incident Power	P _{inc(PK)}	RF Pulse = 1 usec, duty cycle = 0.1%, t _{rise} ≤ 2us, t _{fall} ≤ 2 usec			54	dBm
CW Incident Power	P _{inc(CW)}	400 MHz ≤ F ≤ 2.5 GHz			45	dBm
Flat Leakage	FL	Pin = 50 dBm, RF Pulse width = 1 us, duty cycle = 0.1%, t _{rise} ≤ 2 us, t _{fall} ≤ 2 us		21	22	dBm
Spike Leakage	SL	Pin = 50 dBm, RF Pulse width = 1 us, duty cycle = 0.1%			0.3	erg
Recovery Time	T _R	50% falling edge of RF Pulse to 1 dB IL, Pin = 50 dBm peak, RF PW = 1 us, duty cycle = 0.1%, trise ≤ 2us, t _{fall} ≤ 1 usec		500	750	nsec

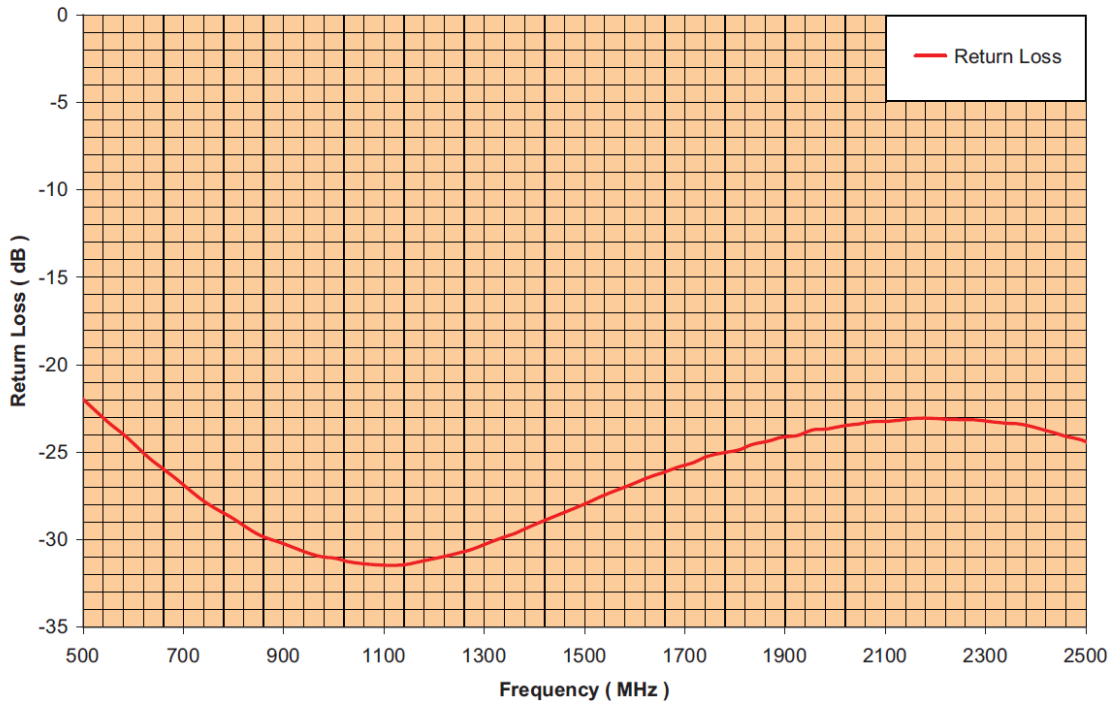
RFLM-501202MC-299 Typical Performance

Z_o = 50Ω, T_{CASE} = 25°C, PIN = 0 dBm as measured on the Ground Plane of the device.

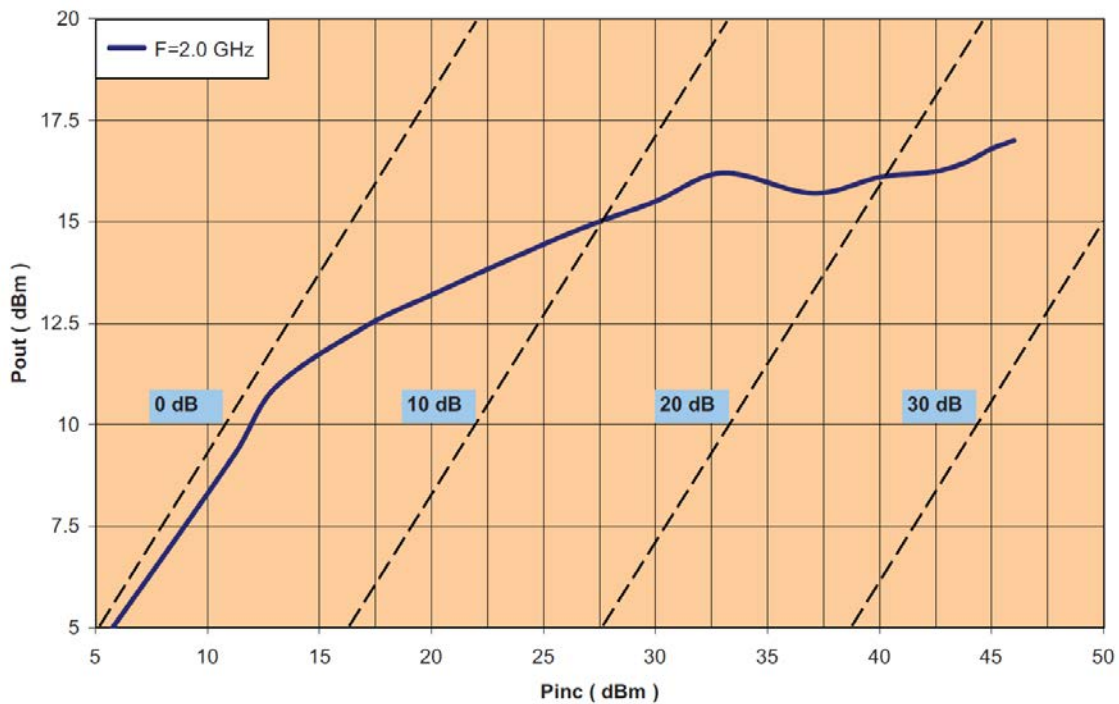
RFLM-501202MC-299 Insertion Loss vs Frequency



RFLM-501202MC-299 Return Loss vs Frequency



RFLM-501202MC-299 Flat Leakage: Peak Power P_{out} vs P_{in}

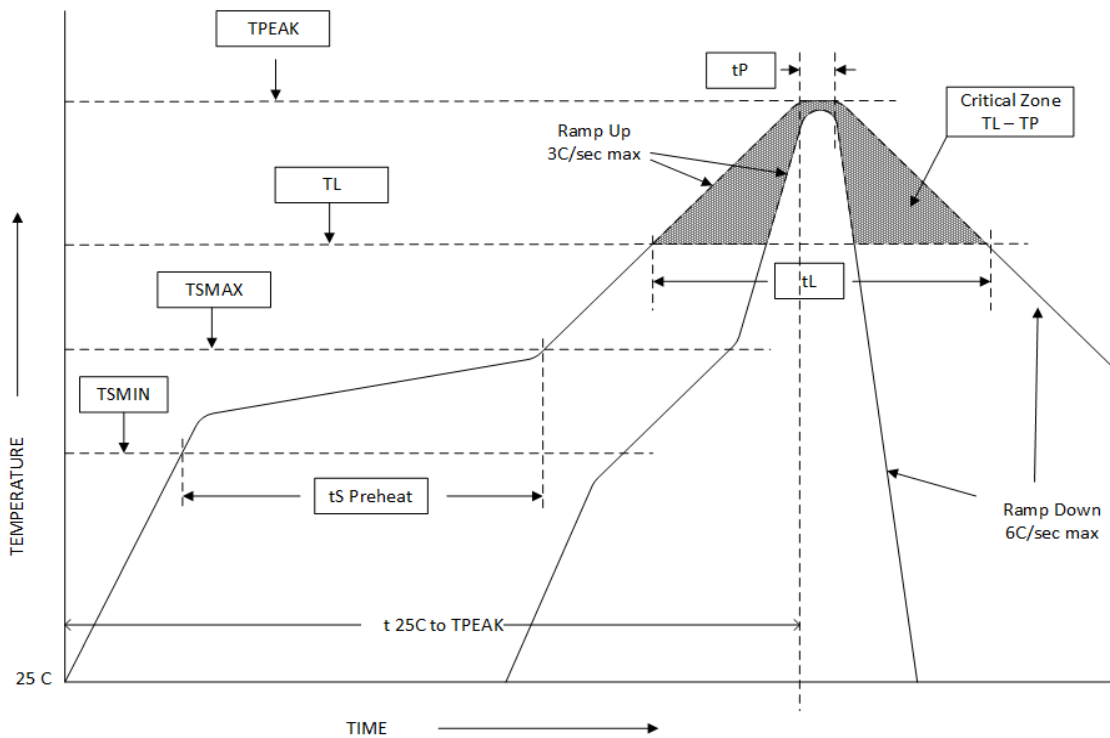


Assembly Instructions

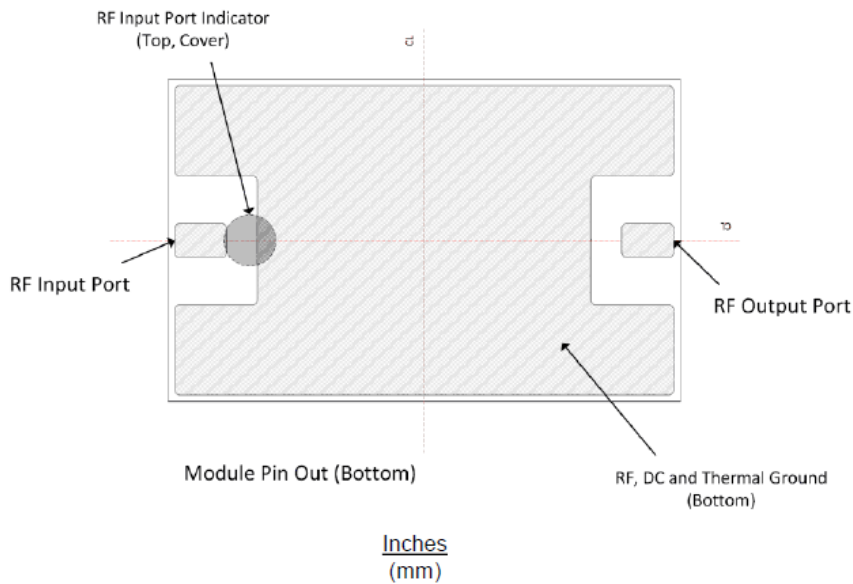
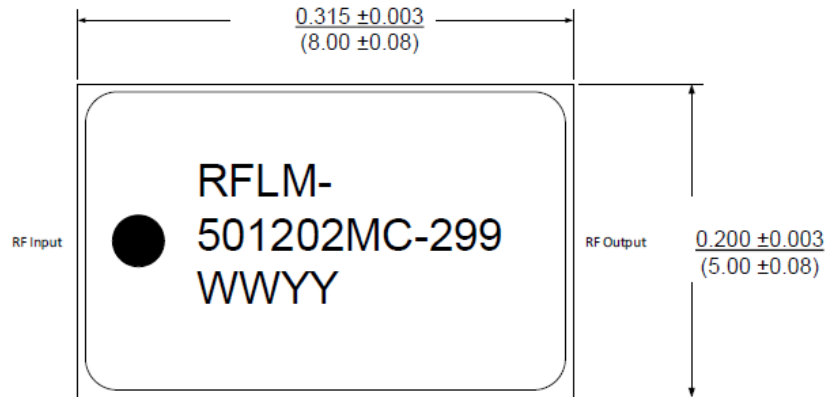
The RFLM-501202MC-299 may be attached to the printed circuit card using solder reflow procedures using either RoHS or Sn63/ Pb37 type solders per the Table and Temperature Profile Graph shown below:

Profile Parameter	Sn-Pb Assembly Technique	RoHS Assembly Technique
Average ramp-up rate (T_L to T_P)	3°C/sec (max)	3°C/sec (max)
Preheat		
Temp Min (T_{smin})	100°C	100°C
Temp Max (T_{smax})	150°C	150°C
Time (min to max) (t_s)	60 – 120 sec	60 – 120 sec
T_{smax} to T_L Ramp up Rate		3°C/sec (max)
Peak Temp (T_P)	225°C +0°C / -5°C	245°C +0°C / -5°C
Time within 5°C of Actual Peak Temp (T_P)	10 to 30 sec	20 to 40 sec
Time Maintained Above: Temp (T_L) Time (t_L)	183°C 60 to 150 sec	217°C 60 to 150 sec
Ramp Down Rate	6°C/sec (max)	6°C/sec (max)
Time 25°C to T_P	6 minutes (max)	8 minutes (max)

Solder Re-Flow Time-Temperature Profile

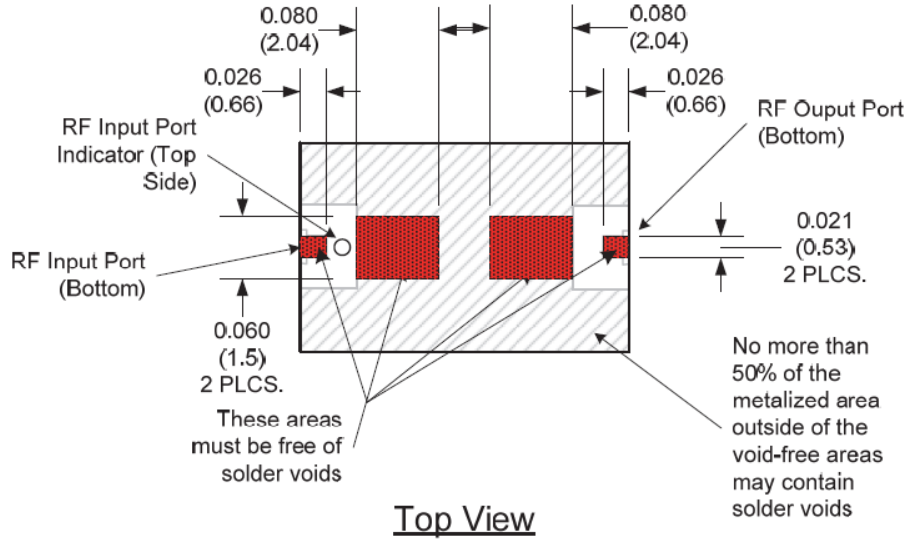


RFLM-501202MC-299 Limiter Module Package Outline Drawing



Notes:

- 1) Metalized area on backside is the RF, DC and Thermal ground. In user's end application this surface temperature must be managed to meet the power handling requirements.
- 2) Back side metallization is thin Au termination plating to combat Au embrittlement (15 u in typ Au plated over Ti-Pd).



Dimensions in inches (mm).

Part Number Ordering Detail:

The RFLM-501202MC-299 Limiter Module is available in either tube or Tape & Reel format.

Part Number	Description	Packaging
RFLM-501202MC-299	400 MHz to 2.5 GHz Band Limiter	Tube
RFLM-501202MC-299TR	400 MHz to 2.5 GHz Band Limiter	TR (250 pcs)